

It all hinges on excellence.

SIMONSWERK

ALPRO[®] ALR

The knuckle insert hinge for aluminium doors

- ✓ slim hinge knuckle
- ✓ invisible comfort adjustment
- ✓ high load capacity

NEW!



BAU 2023

ALPRO® ALR

The knuckle insert hinge for aluminium doors

In addition to high design standards, SIMONSWERK attaches great importance to economical processing, practical handling and smooth installation. This means that the knuckle insert hinge can be quickly and easily integrated into the blind frame. The adjustment mechanism disappears completely into the frame. The adjustment options are extremely convenient and the continuous sealing (for opening profile systems) offers particular advantages with regard to the tightness of high-quality elements.

Advantages at a glance

- slim hinge knuckle Ø 20 mm
- with continuous sealing for opening profile systems
- invisible comfort adjustment
- high load capacities up to 160 kg
- leaf-covering fillings possible without additional processing
- available in different finishes



Fixing system dowel FS 10 - innovative fixing technology

The newly developed fixing system for ALPRO hinges provides the necessary security with a direct screw connection. Thanks to its flexible design, the FS 10 dowel can be used on one side and captive in different profile widths.

Available versions

Version	Profile widths
FS 10/25	30 – 45 mm
FS 10/40	45 – 60 mm
FS 10/50	55 – 70 mm



Picture exemplary



ALPRO knuckle insert hinge

Knuckle hinge system ALR for inward opening aluminium doors

Knuckle hinge system up to **160 kg**

Product Features

- for inward opening aluminium doors
- material aluminium
- direct screw connection with FS 10 dowel
- with continuous sealing with impacting profile systems
- invisible comfort adjustment
- maintenance-free slide bearing technology

Technical Data

Load capacity	i two hinges per door leaf (1x2m)	160.0 kg
Knuckle length		160.0 mm
Knuckle diameter		20.0 mm

Finishes

RAL 9016 Traffic White (070), Silver coloured (065), RAL 9005 Matt Black Fine (102), Stainless Steel Effect (103)

Combination

accessories	dowel	FS 10
-------------	-------	-------

Installation tools

upon request

Note

i The load capacity mentioned above refers to the use of two hinges per door leaf (1x2m).

The knuckle hinge systems of the ALR series are system-adapted hinge types that are developed in close coordination between system providers and SIMONSWERK. Profile combinations vary accordingly, so that special hinge variants are required. Therefore, precise details of the profile combinations used in each case are required for enquiries.

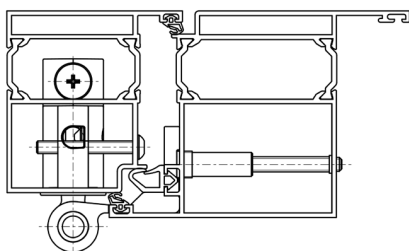
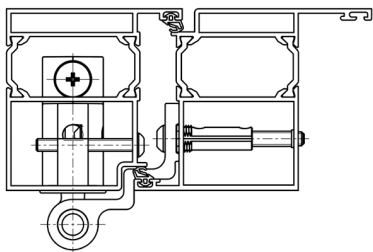
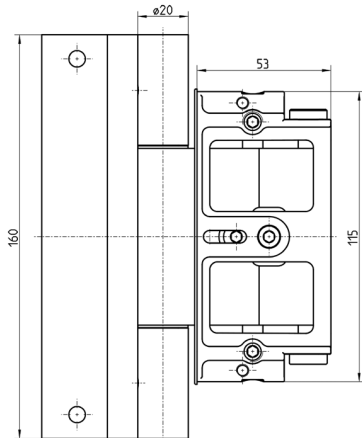
Classification key

3	7	4	0*1	1	4*2	0	11*3
----------	----------	----------	------------	----------	------------	----------	-------------

*1 Test evidence for functional doors to be achieved with full door sets and assemblies.

*2 depending on the finish

*3 The test cycles in continuous operation were performed with a weight of 160 kg



SIMONSWERK

ALPRO® ALR

The knuckle insert hinge for aluminium doors

SIMONSWERK GmbH

Bosfelder Weg 5
33378 Rheda-Wiedenbrück
Germany

+49 5242 4130

info@simonswerk.de

www.simonswerk.com

Member of the

**SIMONSWERK
GROUP**

© SIMONSWERK GmbH
03/2023, 5 800581 0 00001/2.0
Subject to technical modifications.

